

ACP604 (ADAS) Camera Specifications




Applicable Model: MD500S

Change History

File Name	ACP604 (ADAS) Camera Specifications		
Project	MD500S	Creation Date	2025/4/8 2026/3/5
Subproject	Accessory Specifications	Total Pages	5
Version	V1.1	Confidential	External Documentation

Copyright and Disclaimer

Copyright © Meitrack Group 2025. All rights reserved.

MEITRACK and  are trademarks that belong to Meitrack Group and its subsidiary.

MEITRACK reserve the right to alter or amend the design, model and specification without prior notice.

Without prior written consent of Meitrack Group, this user manual, or any part thereof, may not be reproduced for any purpose whatsoever, or transmitted in any form, either electronically or mechanically, including photocopying and recording.

Meitrack Group shall not be liable for direct, indirect, special, incidental, or consequential damages (including but not limited to economic losses, personal injuries, and loss of assets and property) caused by the use, inability, or illegality to use the product or documentation.

Documentation Update Records

Version	Date	Modified
1.0	2025-04-08	Initial draft.
1.1	2025-05-08	Add comparison diagrams of WDR cameras and ordinary cameras.
1.2	2026-03-05	Update device parameters.

Contents

1 Product Specifications	- 4 -
2 Standard Configuration	- 5 -
3 Actual installation drawing	- 5 -
4 Installation comparison	- 5 -

1 Product Specifications

Item	Specifications	
cameras	WDR cameras	Normal cameras
Lens optical performance		
Camera Type	ADAS Camera	
Sensor Type	200W CMOS	100W CMOS
Pixel size	2.9um*2.9um	3.75um*3.75um
Lens	7G	4G
Focal Length	WDR cameras: 6mm	Normal cameras: 3.6mm
Aperture	F1.6	F2.2
Lens Interface Type	M12xP0.5	
Field of View Angle	D=63° H=54° V=29°	D=65° H=55° V=31°
Image Mode	Color Image	
Resolution	The default is 1280 x 720P. Supports up to 1080P	
Dynamic Range	78~89dB Note: Only the WDR camera has this parameter.	
Audio Input	NA	
Video Output	1.0Vp-p, 75 Ω	
Output signal	AHD analog high definition	
Video format	Default PAL system	
Frame rate	25fps	
Electronic shutter	Auto 1/50-1/100,000sec	
AGC	Auto	
Supply voltage	VDC5V	
Current	260 mA	100mA
Power consumption	1.2 W	
Operating temperature	-20°C - +70°C	
Storage temperature	-25°C - +80°C	
Aviation wire length	4900mm	

2 Standard Configuration

Order	Name	Quantity	Unit	Remarks
1	In-car camera	1	Pcs	Standard



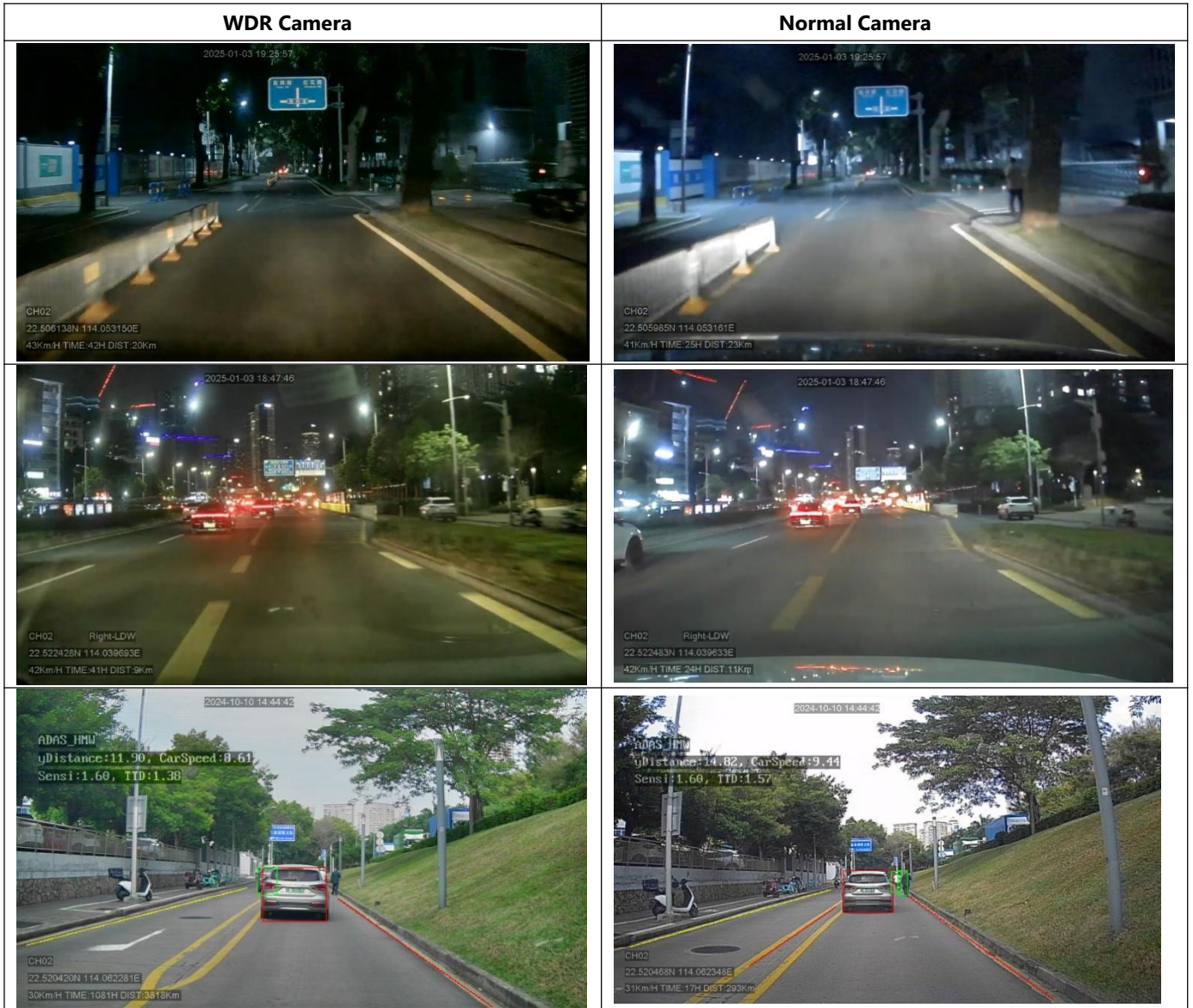
3 Actual installation drawing



4 Installation comparison

Advantages of WDR cameras compared to ordinary cameras: The overall picture brightness is slightly lower; the picture clarity is higher, the overall white balance is normal, the color saturation is also normal, and the picture looks more natural. Especially in night - time environments, there is no over - exposure phenomenon for strong light. At the same time, the accuracy of ADAS AI detection will increase by 15~20%.

Note: The ACP604 camera can be divided into WDR cameras and Normal cameras. The following are the comparison diagrams.



If you have any questions, do not hesitate to email us at info@meitrack.com.